



West Riverside Canal

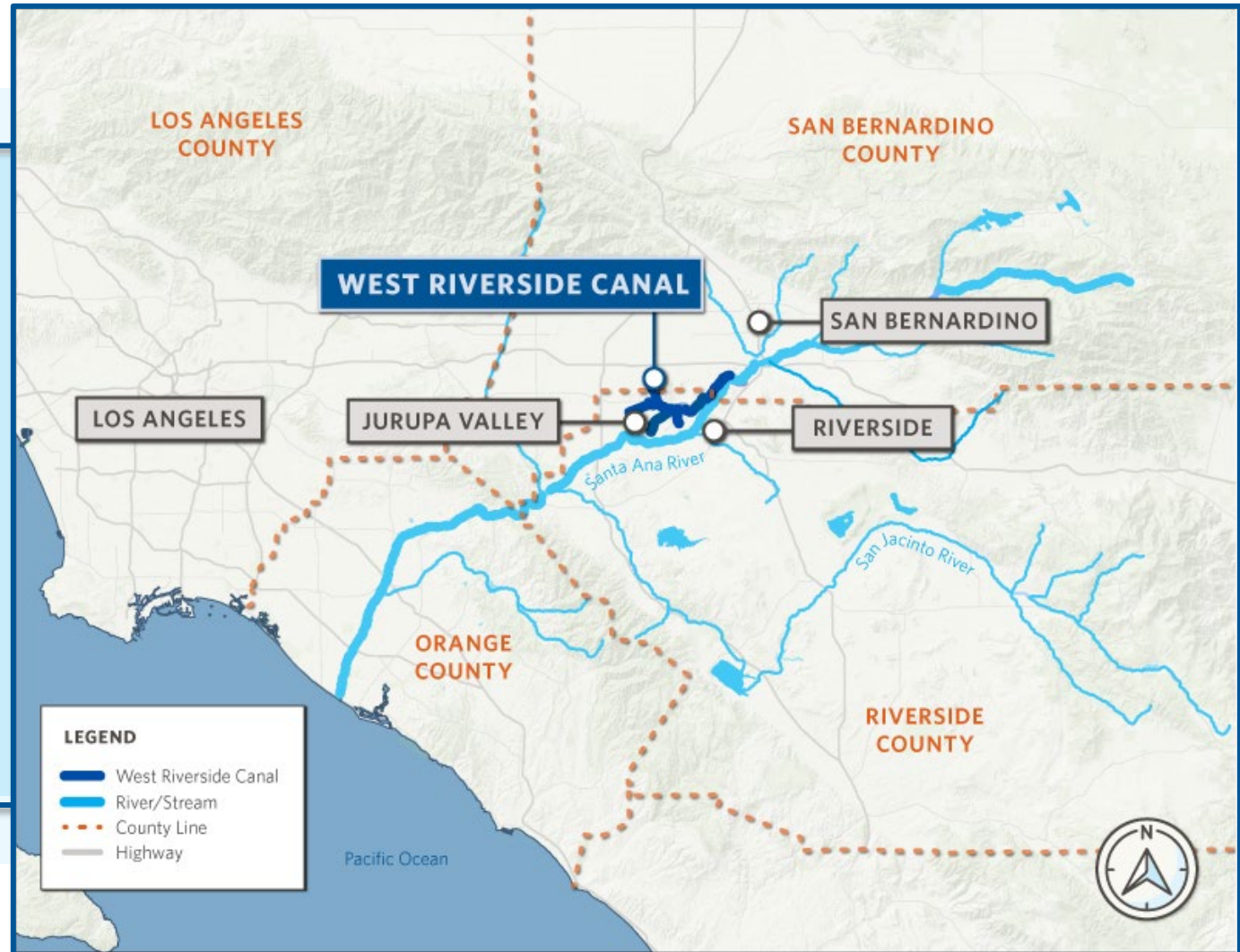
Overview and Partnership Opportunities

Q1 2025



WHAT IS THE WEST RIVERSIDE CANAL?

- 20+ miles of canal
- Provided irrigation water from 1880's to the 1960's
- 3,200-acre feet of groundwater rights





OUR OBJECTIVES

To leverage Pedley Land Company's unique asset footprint and water rights to work with a Public Agency or Private Company to provide Water Solutions to the Inland Empire (via Partnership or Sale)

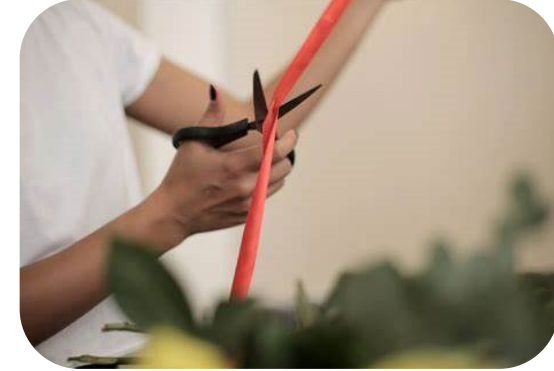
BENEFITS OF SUCCESSFUL COLLABORATION



Fire Safety Resilience → Water Supply Reliability



Regional Water Conveyance



Streamlined Project Delivery



Endangered Species Habitat Enhancement

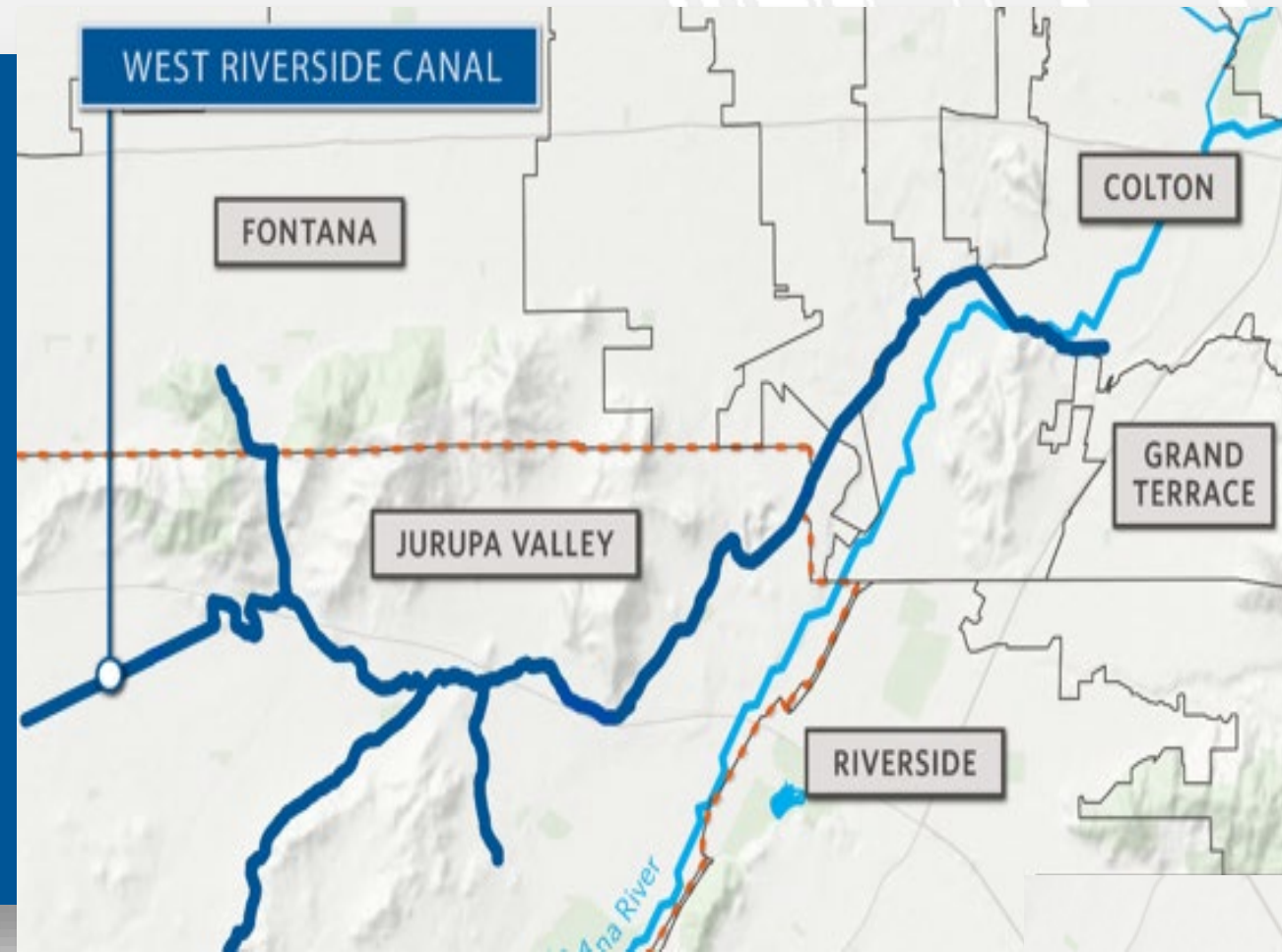


Capitalize on Multiple Benefits



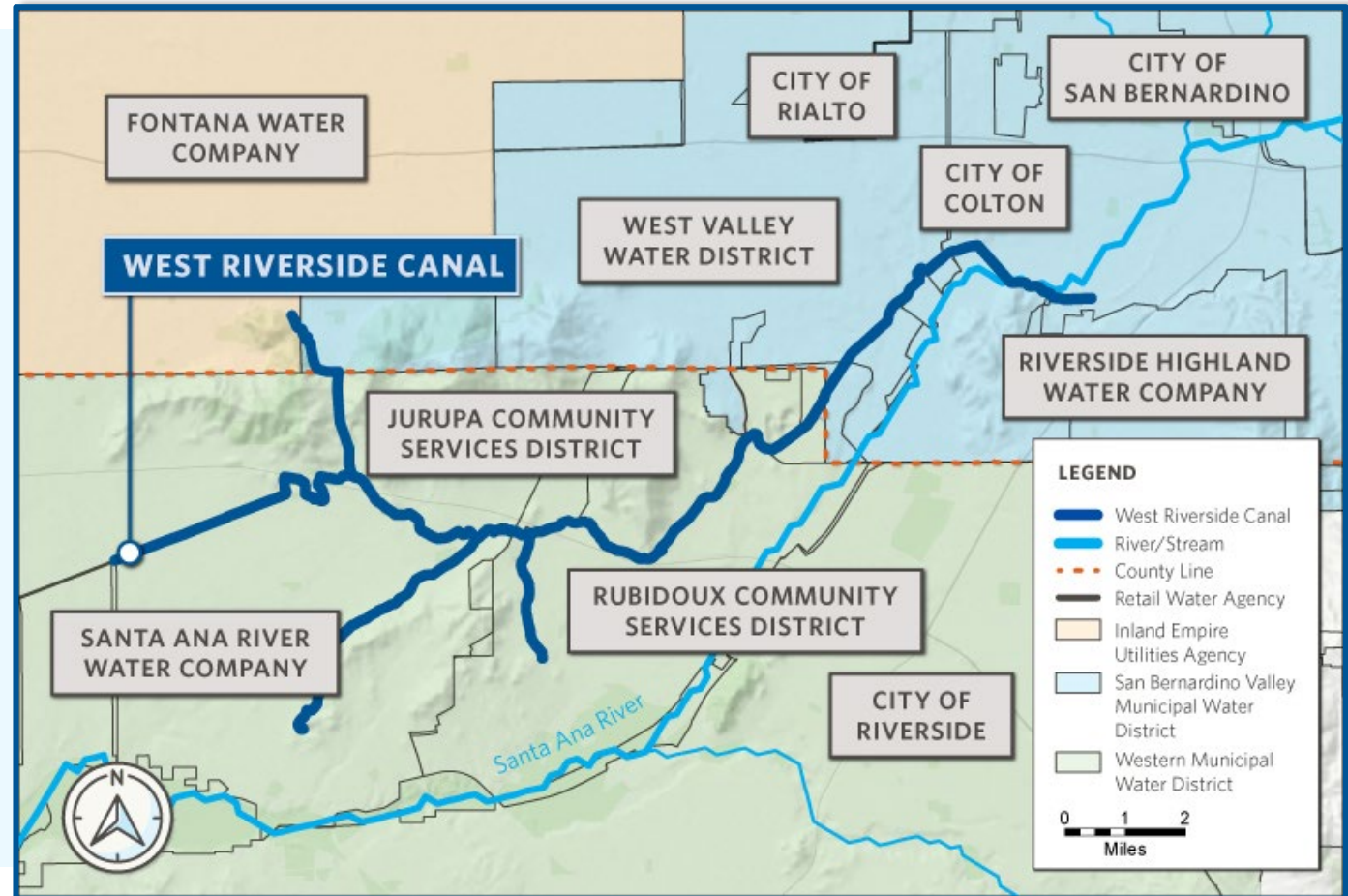
Groundwater Enhancement

OUR FOOTPRINT



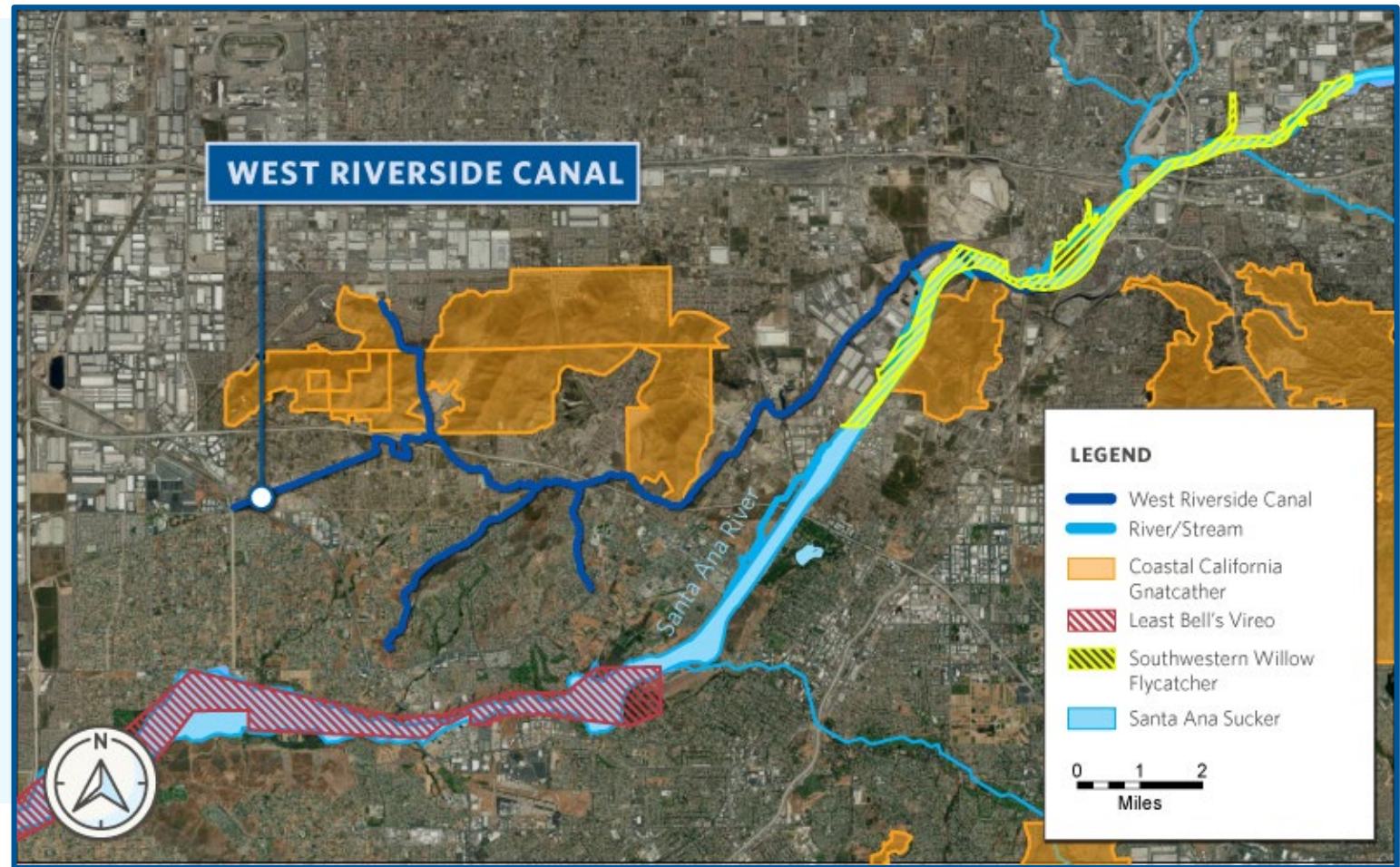
OVERLAPS WITH SEVEN WATER RETAILERS

- Cities of Rialto, San Bernardino, and Colton
- Riverside Highland Water Company
- West Valley Water District
- Rubidoux Community Services District
- Jurupa Community Services District
- Fontana Water Company
- Santa Ana River Water Company



ENDANGERED SPECIES HABITAT CONSERVATION

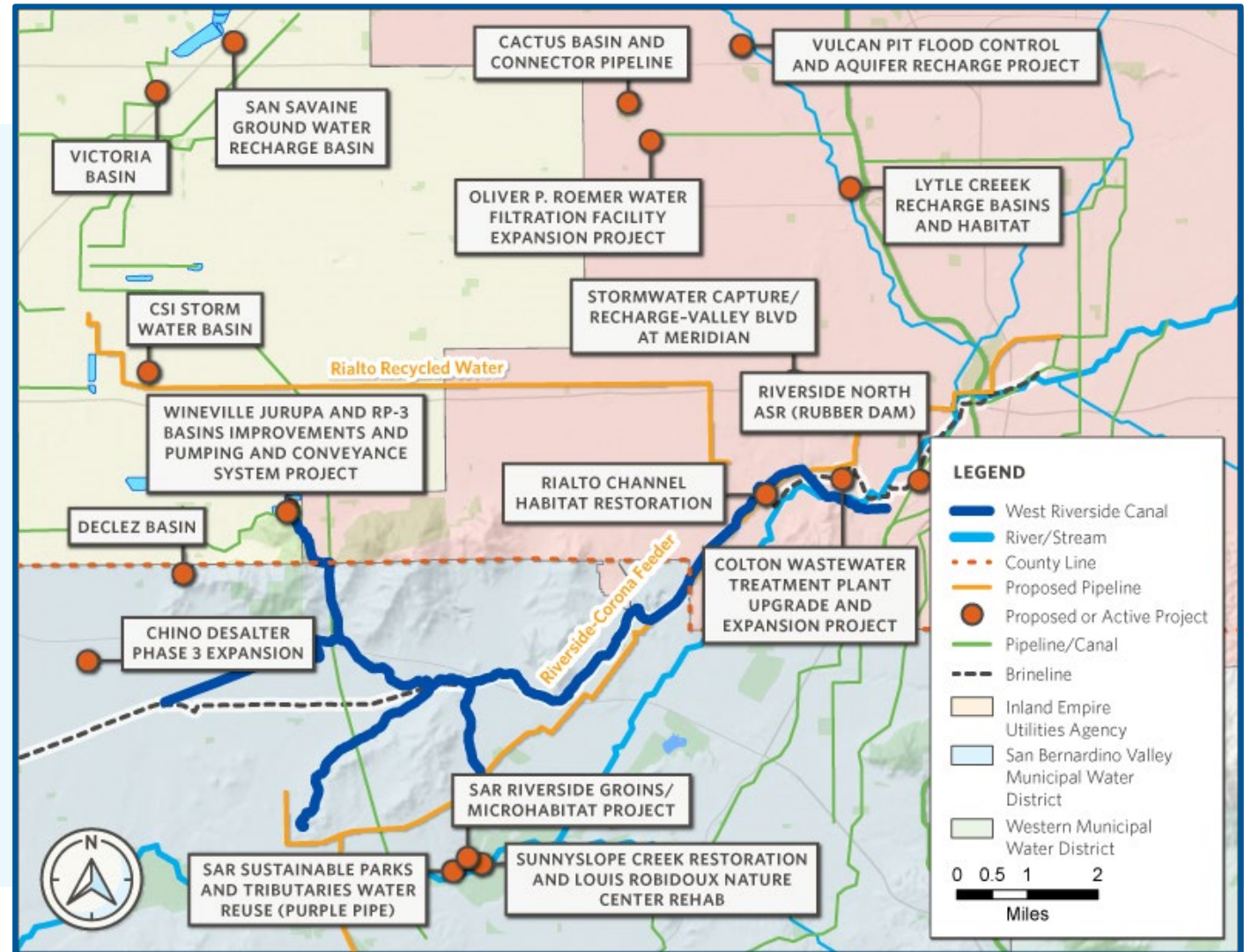
- Coastal California Gnatcatcher
- Least Bell's Vireo
- Santa Ana Sucker
- Southwestern Willow Flycatcher



NEAR MANY PLANNED WATER PROJECTS

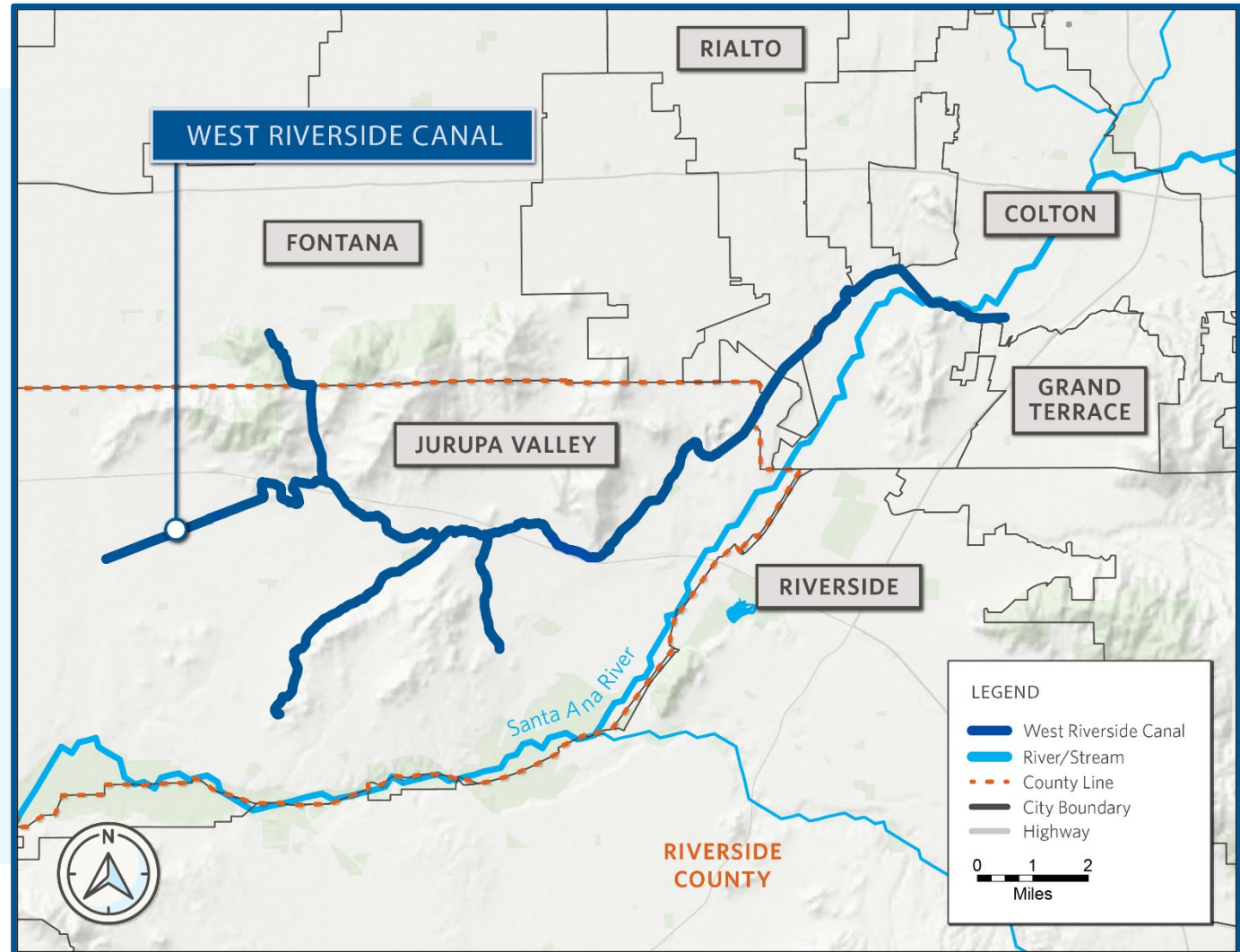
- Regional Projects

- One Water One Watershed Plan
- Upper Santa Ana River Watershed Integrated Regional Urban Water Management Plan
- Upper Santa Ana River Habitat Conservation Plan
- Santa Ana River Conservation and Conjunctive Use Project
- Western Municipal Water District Integrated Regional Water Management Plan



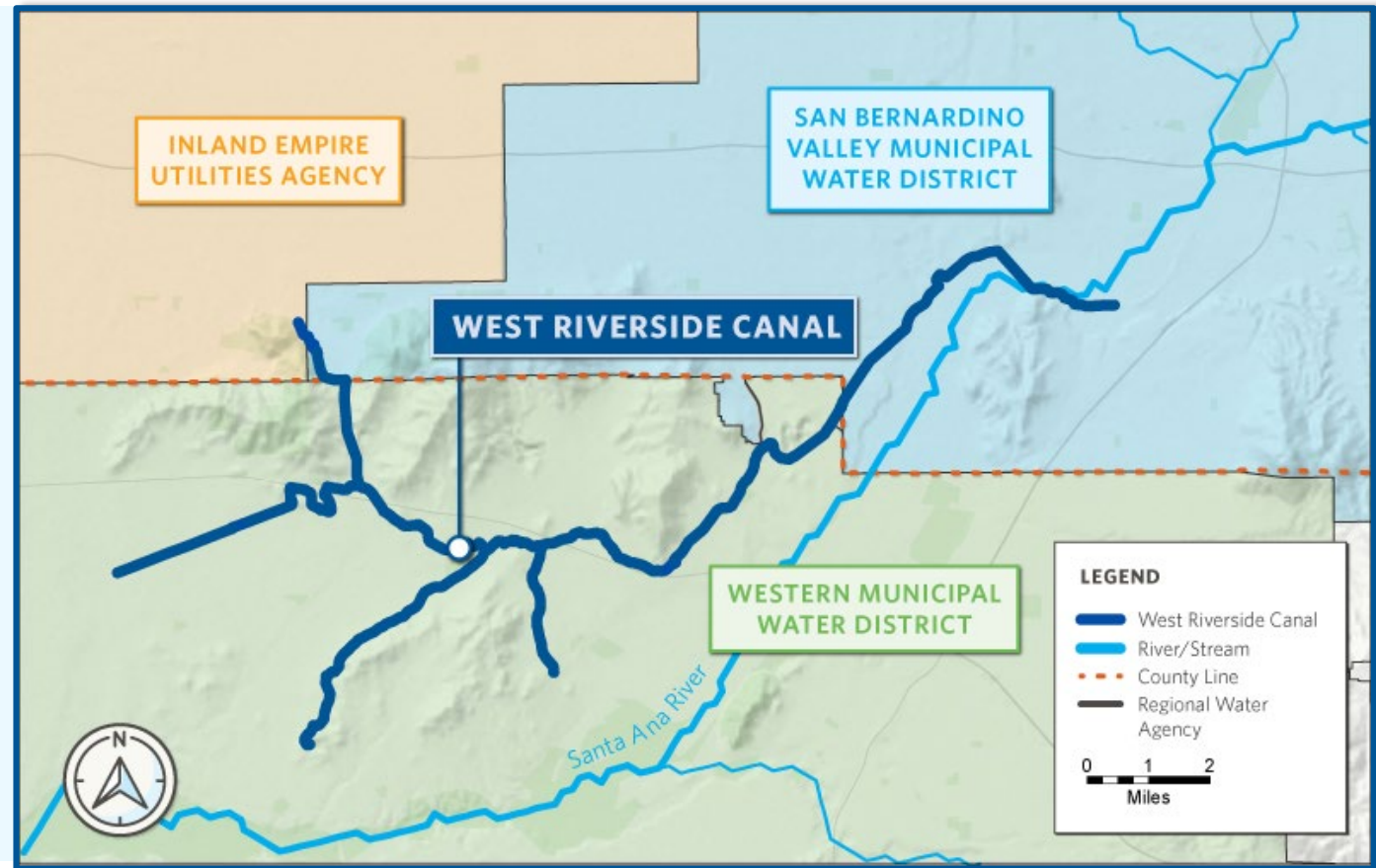
CITIES ALONG THE CANAL

- Colton
- Grand Terrace
- Fontana
- Jurupa Valley
- Rialto
- Riverside
(near the canal)



SPANS THREE REGIONAL WATER WHOLESALERS

- Inland Empire Utilities Agency*
- San Bernardino Valley Municipal Water District
- Western Municipal Water District*



**Metropolitan Water District Member*

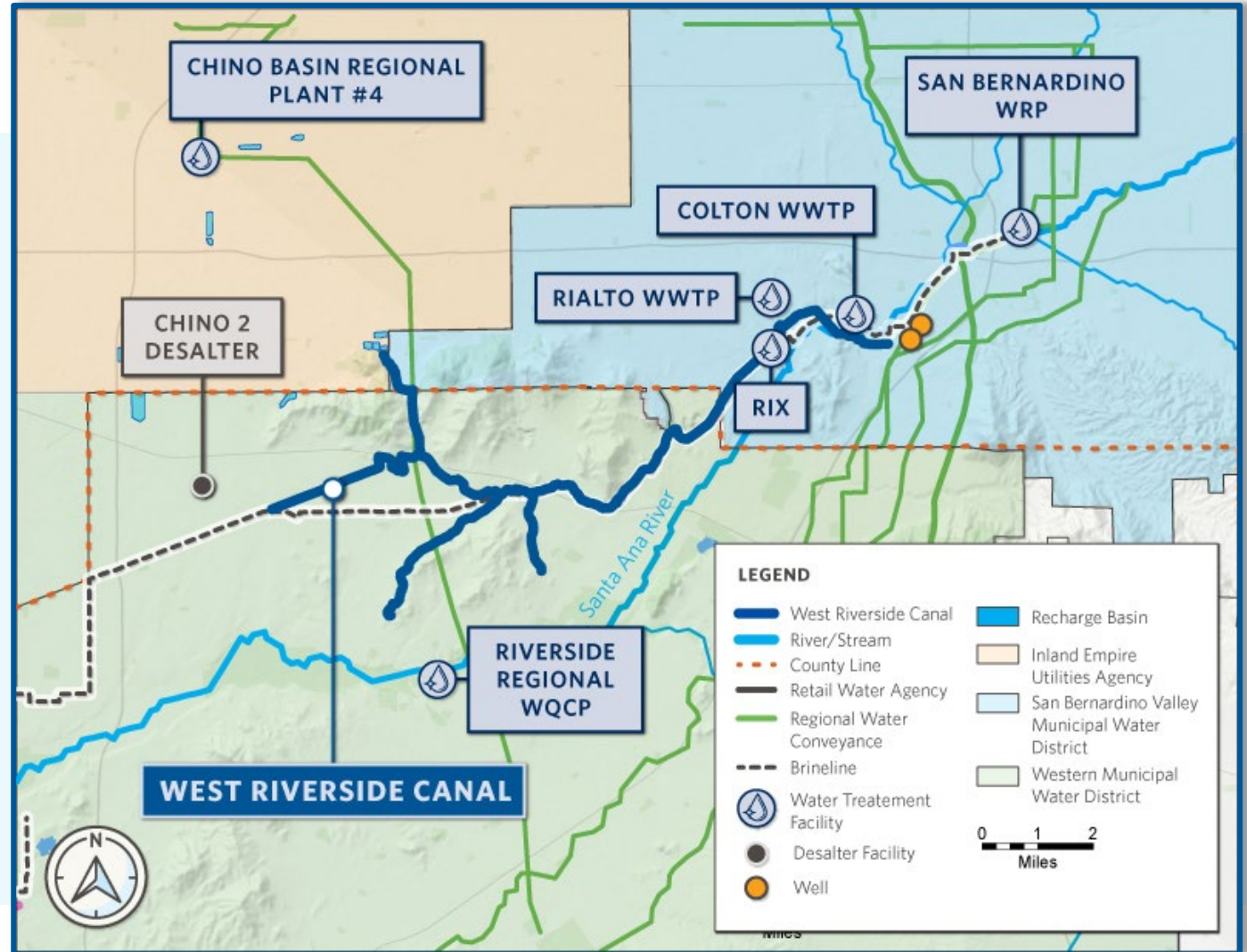
CONNECTS TWO GROUNDWATER BASINS

- Two Groundwater Basins
 - Chino
 - Riverside-Arlington
- 3,200-acre feet of groundwater rights in the Upper Santa Ana Valley-Riverside-Arlington Basin



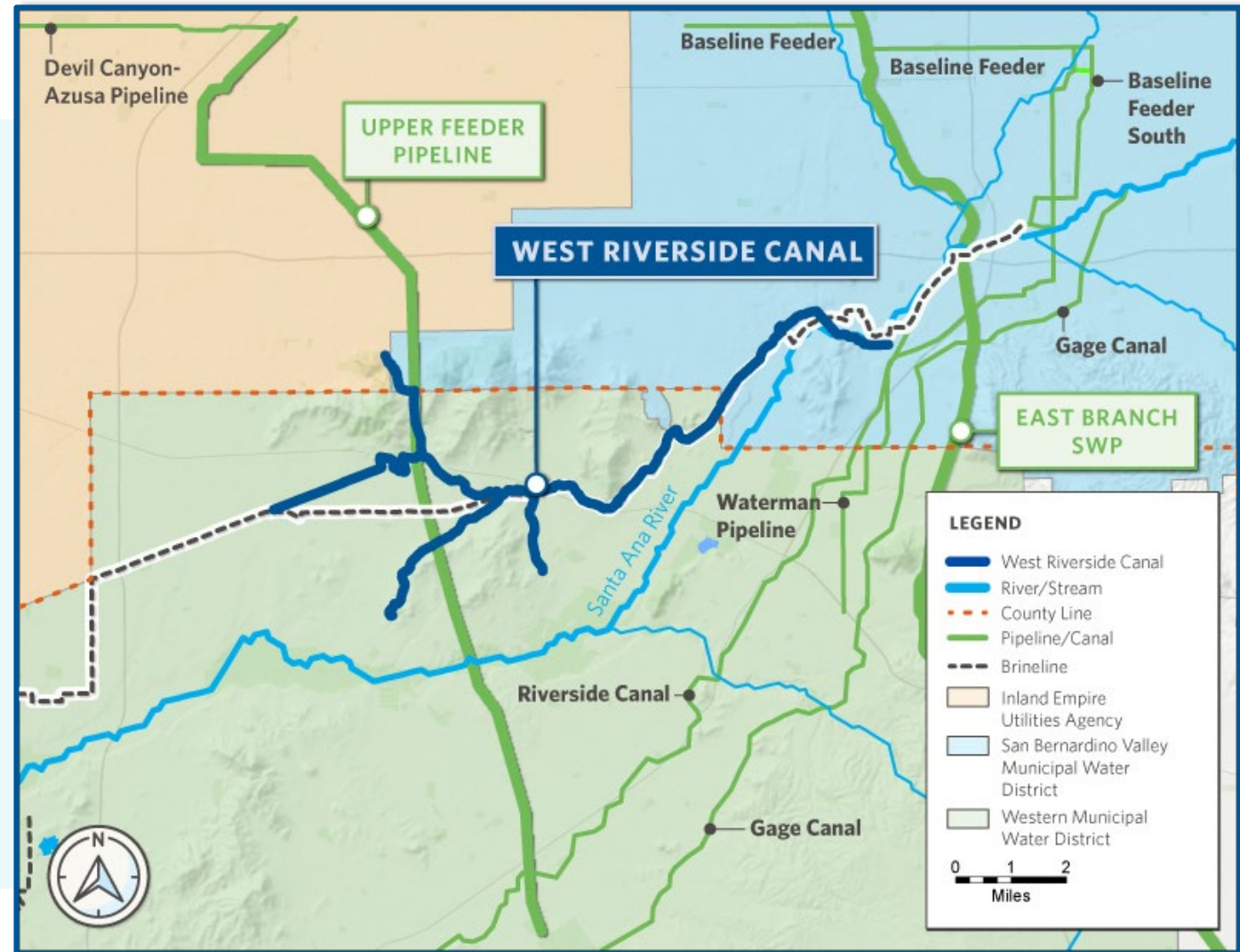
NEAR MULTIPLE WATER TREATMENT AND WATER RECYCLING FACILITIES

- Colton WWTP (City of Colton)
- Rialto WWTP (City of Rialto)
- Rapid Infiltration and Extraction (RIX) (San Bernardino Municipal Water Department)

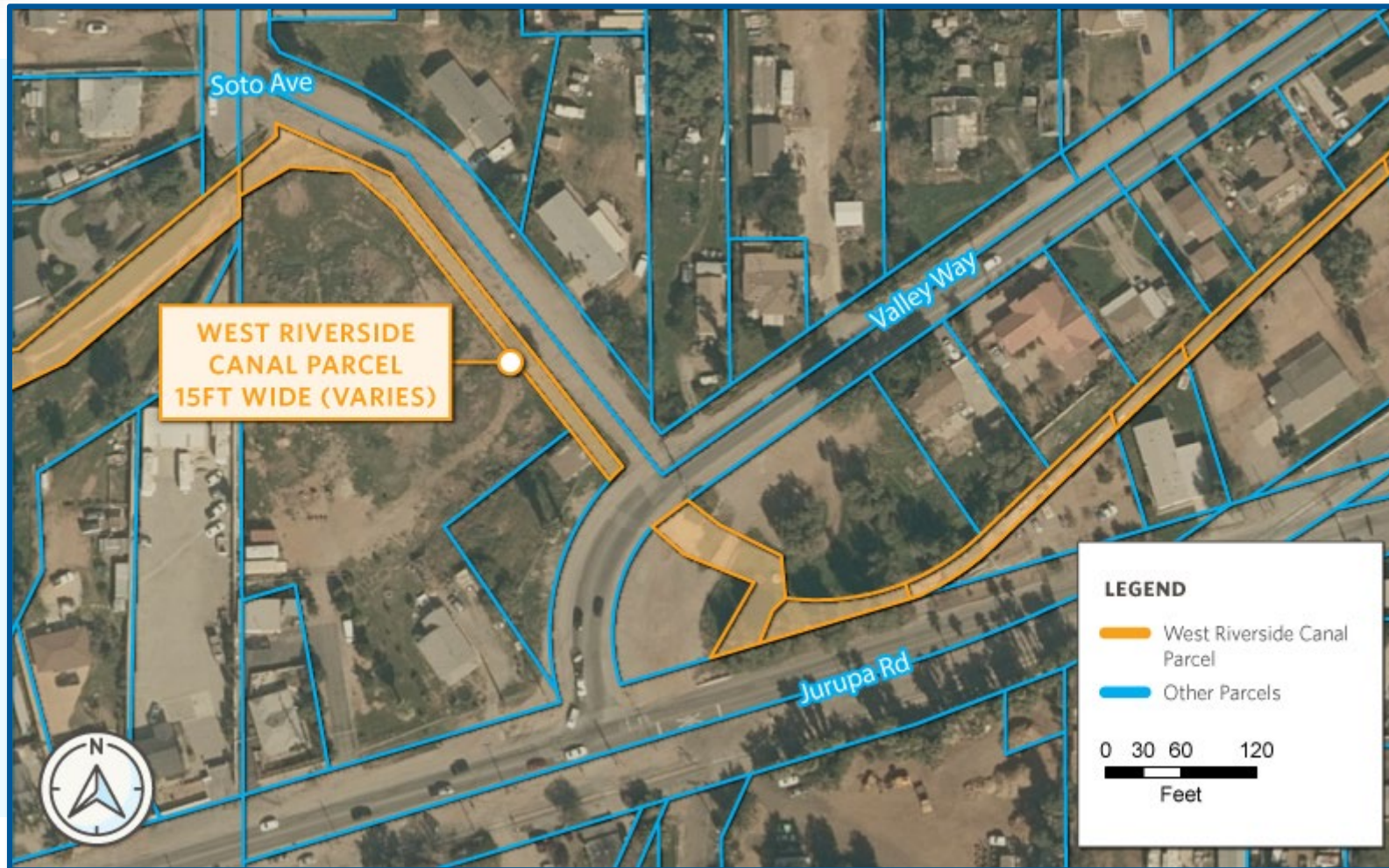


NEAR MULTIPLE WATER CONVEYANCES

- Upper Feeder (MWD)
- East Branch State Water Project (State of California)
- Riverside Canal (City of Rialto)



UTILITY CORRIDOR



- Telecom
- Electrical
- Gas
- Hydrogen

DRONE VIDEO & PHOTOS



DRONE VIDEO

Click to view: <https://youtu.be/F-PaoHMOV34?si=A-QXAL7gAdpy2Np0>



**Pedley Land - Overview of West
Riverside Canal Footprint**

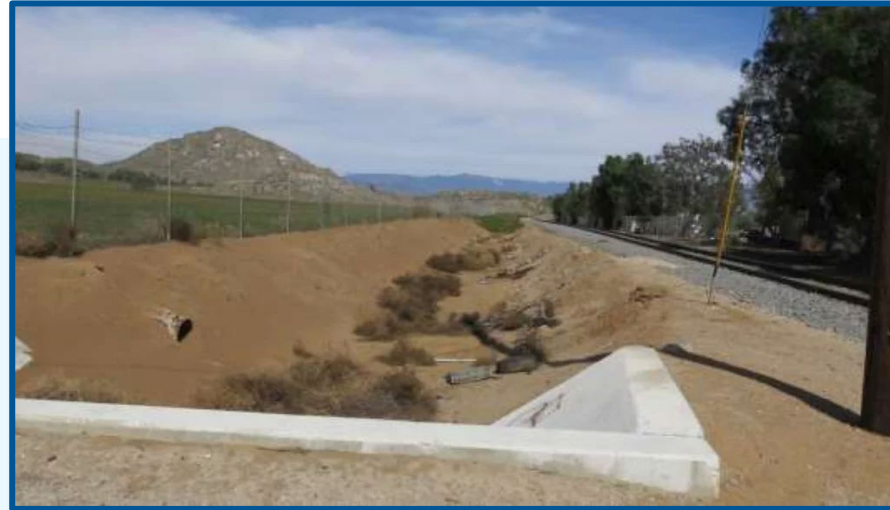
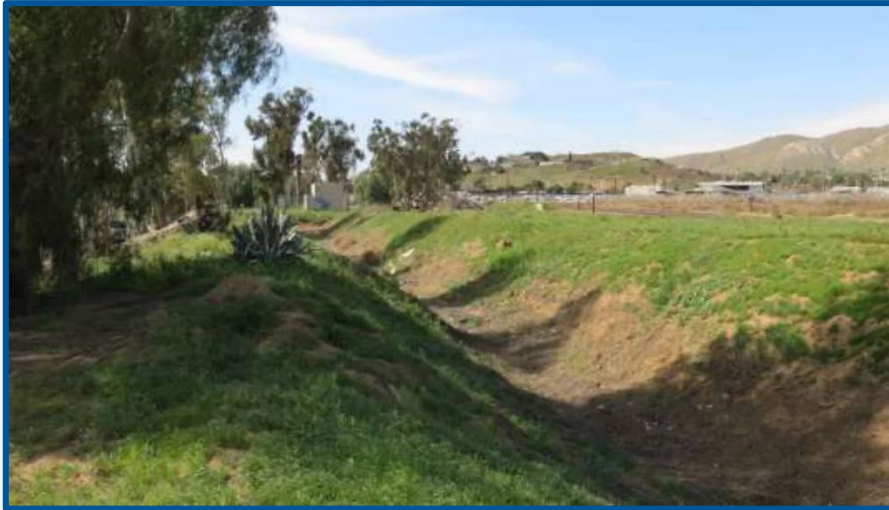
DRONE PHOTOS



DRONE PHOTOS



PHOTOS



PHOTOS



POTENTIAL SOLUTIONS



WHAT ARE THE PROJECT OPPORTUNITIES?

- Water Distribution & Conveyance or Agency Intertie
- Groundwater Supply & Recharge
- Utility Corridor (telecom, electrical, gas, biogas, hydrogen)
- Habitat Enhancement/Restoration (Santa Ana sucker fish)
- Stormwater Capture & Reuse (intercept storm drain lines)
- Multiuse (Recreation, Public Access, Solar)



POTENTIAL PROJECT DRIVERS

- Natural disaster requiring conveyance (Fire resilience)
- Increasing future water demands
- Decrease in supply (State Water Project, drought, Colorado River)
- Expansion of recycled water
- Stormwater capture
- Protected species

